



TauTona Mine

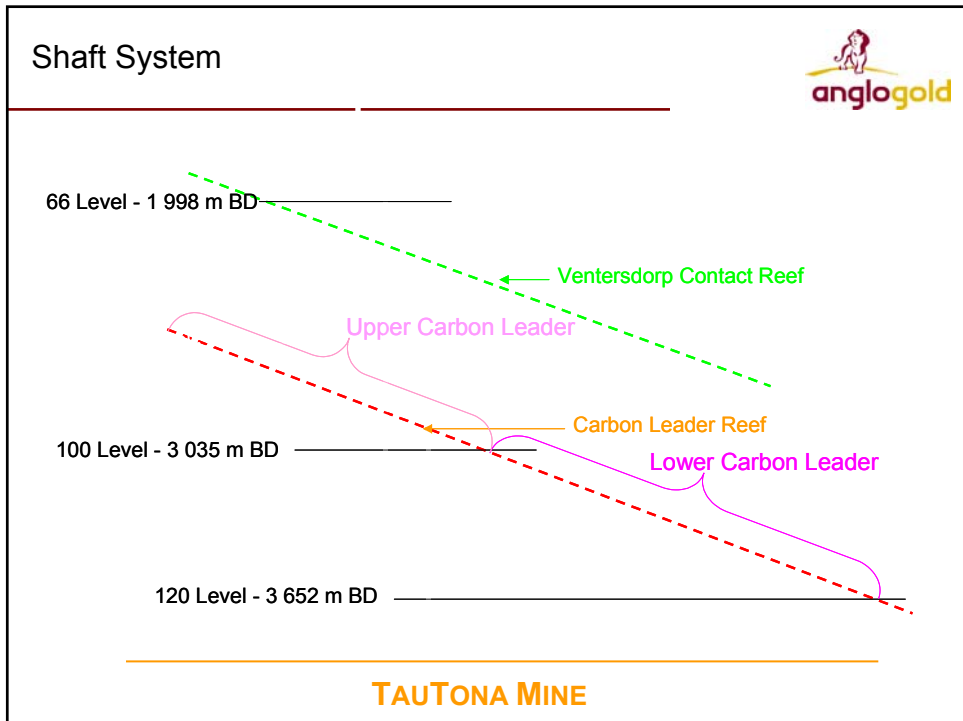
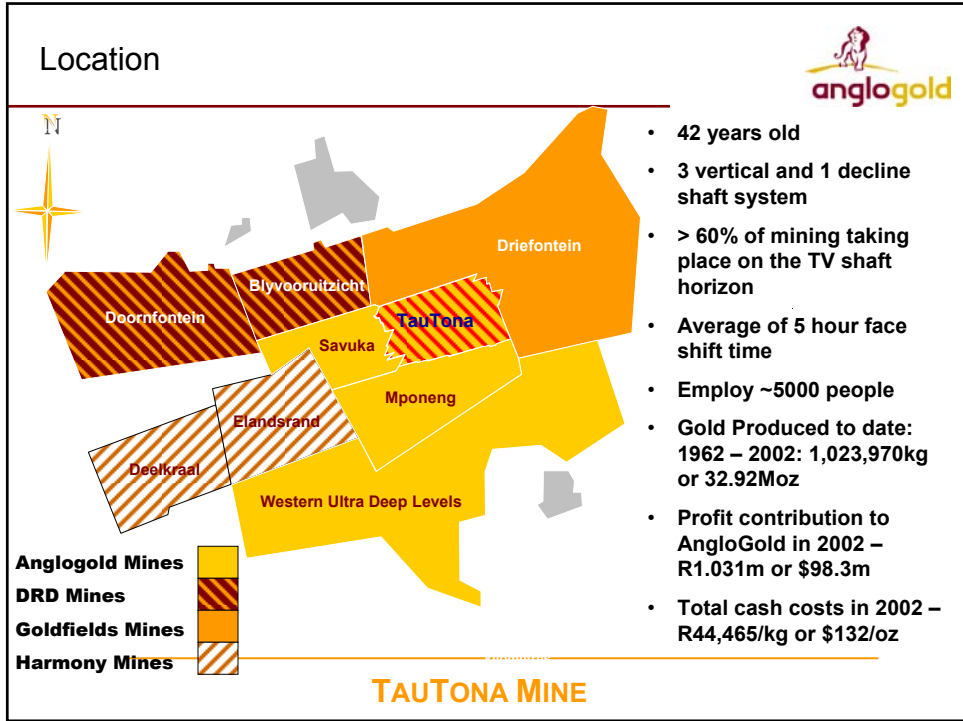
**Analysts presentation
9 December, 2003**

Overview



- **Location & salient facts**
- **Safety**
- **Resource and reserves**
- **Mining method**
- **Production & productivity statistics**
- **Financials**
- **Level 2 projects recently approved**
- **Area 1C11**
- **Further opportunities**
- **Visitors induction**

TAUTONA MINE



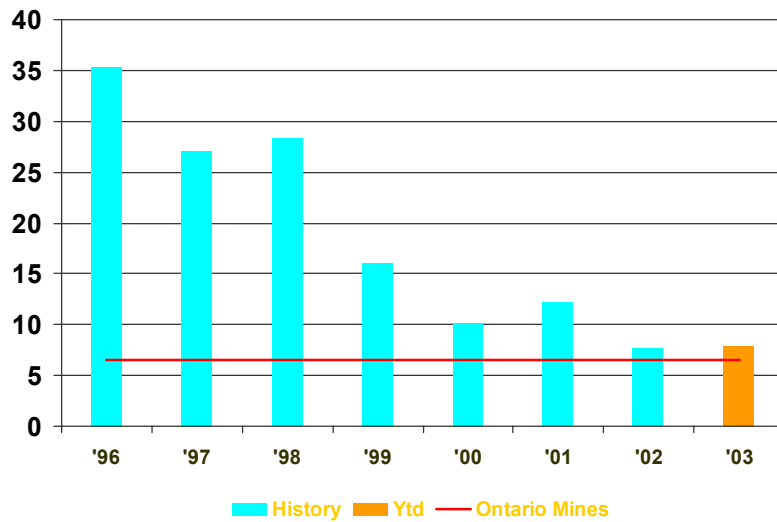
Safety at TauTona



- an effective Risk Management System;
- to identify and minimise health risks and consequent compensation payouts
- to forecast and manage the impact of HIV/Aids on the organisation;
- creation and maintenance of a Safety mindset

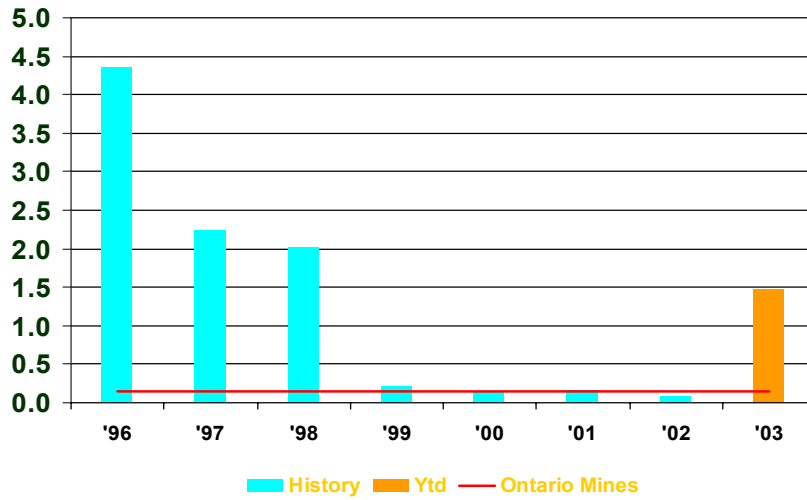
TAUTONA MINE

Safety - Lost time injury rate per million man hours



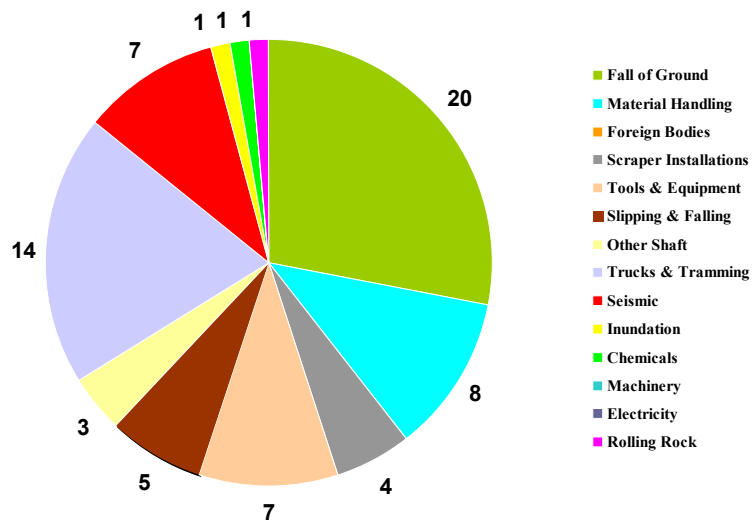
TAUTONA MINE

Safety - Fatality Rate



TAUTONA MINE

What causes injuries?



TAUTONA MINE

Safety achievements



- 1 000 000 Fatality free shifts
 - 2000
 - 2003
- Winners of the Department of Minerals and Energy Safety Flag
 - 2000
 - 2001
- Winners of the AngloGold Chairman's shield award for safety
 - 2000
 - 2002

TAUTONA MINE

Reserves and Resources as at Dec 31, 2002



- **Reserves** - 18.6 million tons @ 10.57g/t for 6.1 million ounces of gold
- **Resource** - 21.1 million tons @ 23.3g/t for 15.9 million ounces of gold

TAUTONA MINE

Mining Method - Longwall



- 90% is mined using the mini-longwall method.
- Follow behind development is kept under the overstoped area of the mini longwall, relatively shallow between 20 - 40 metres in the footwall.
- Every 750 m replacement development is brought through to take over the follow behind development, this development is much deeper in the footwall >100m.
- Support is provided using backfill

TAUTONA MINE

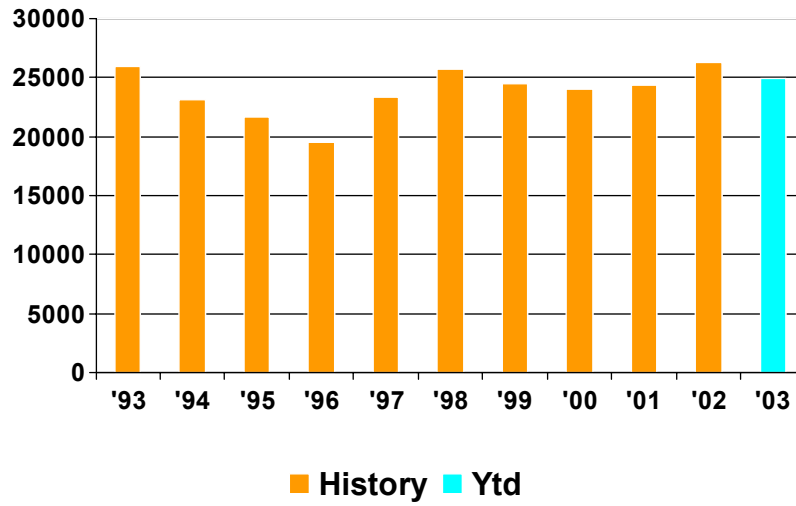
Treatment Process



- TauTona and Savuka Mines share a common processing plant.
- This facility uses a conventional milling and carbon-in-pulp (CIP) process. Treatment capacity is 280,000 tpm, of which TauTona supplies 150,000 tpm.
- Gold is loaded on to the carbon at the plant, and is then transported to the nearby Mponeng plant for electro-winning, smelting and final recovery.

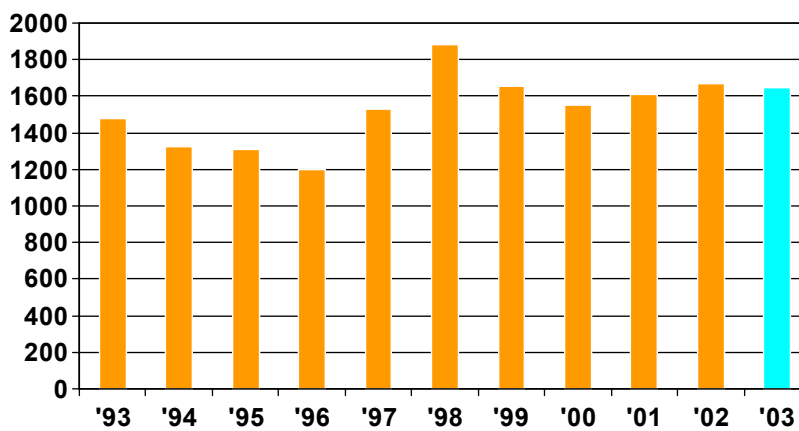
TAUTONA MINE

Productivity - Total Centares (m²/month)



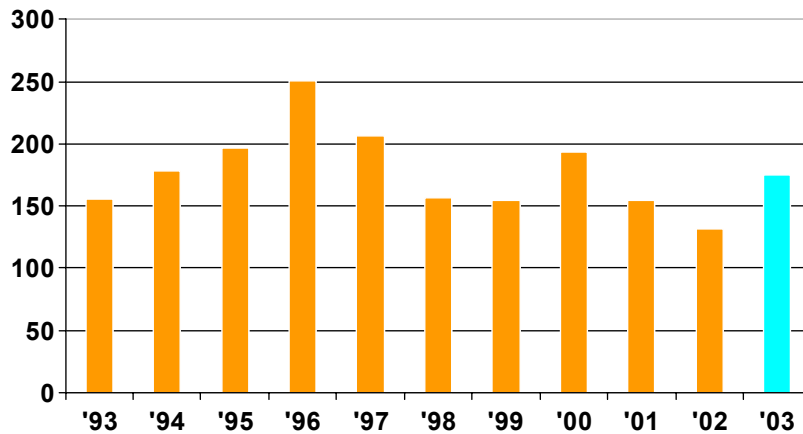
TAUTONA MINE

Production - Gold Recovered (kg/month)



TAUTONA MINE

Total Cash Costs \$/ounce



TAUTONA MINE

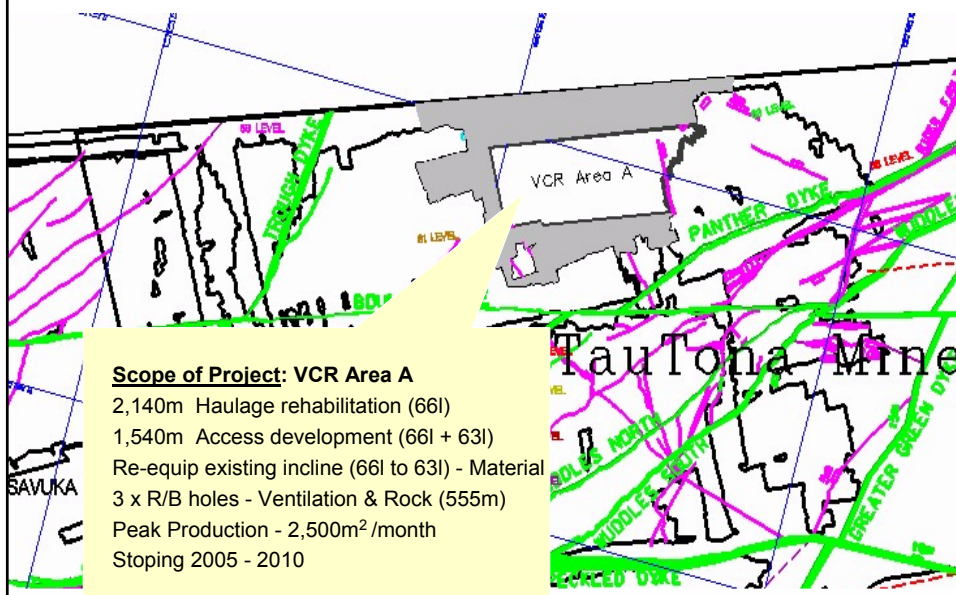
Approved Capital Projects



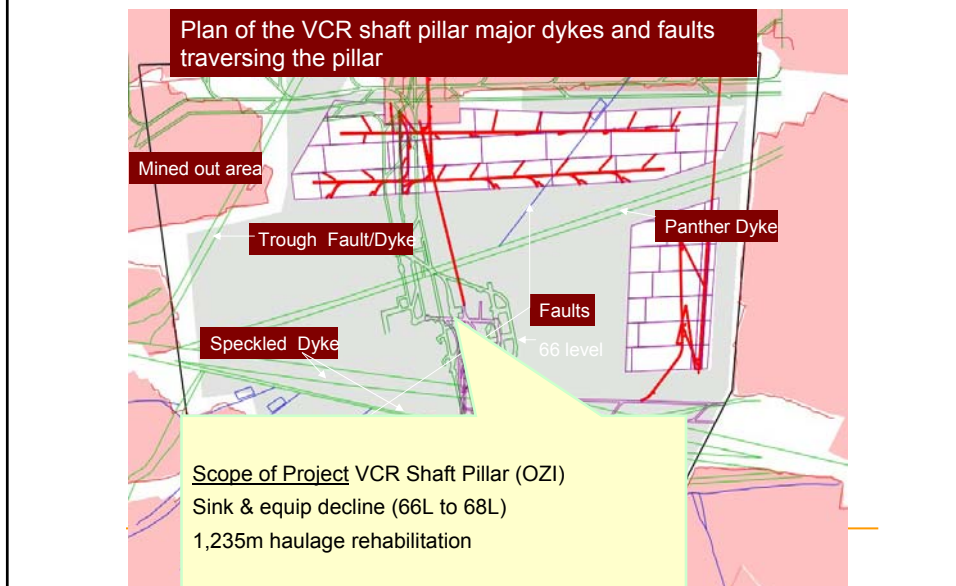
Project	Incremental Ounces	Project Capex		Cash Costs \$/oz	LOM
		Total	Remaining		
Mponeng Deepening South Africa	4.0	R1.3bn	R130m	270	+5 years to 2012
Moab Khotsong South Africa	4.1	R4.2bn	R900m	155	2015
→ Tau Tona Expansion South Africa	2.3	R430m	R171m	210	+6 years to 2013
→ TauTona CLR E 120-125L South Africa	1.4	R982m	R982m	200	+2 years to 2015
→ TauTona VCR Pillar/Area A South Africa	0.4	R192m	R192m	200	+1 year to 2014
→ Siguiiri (CIP Plant) Guinea	2.3	\$72m	\$72m	212	+ 5 years to 2012

TAUTONA MINE

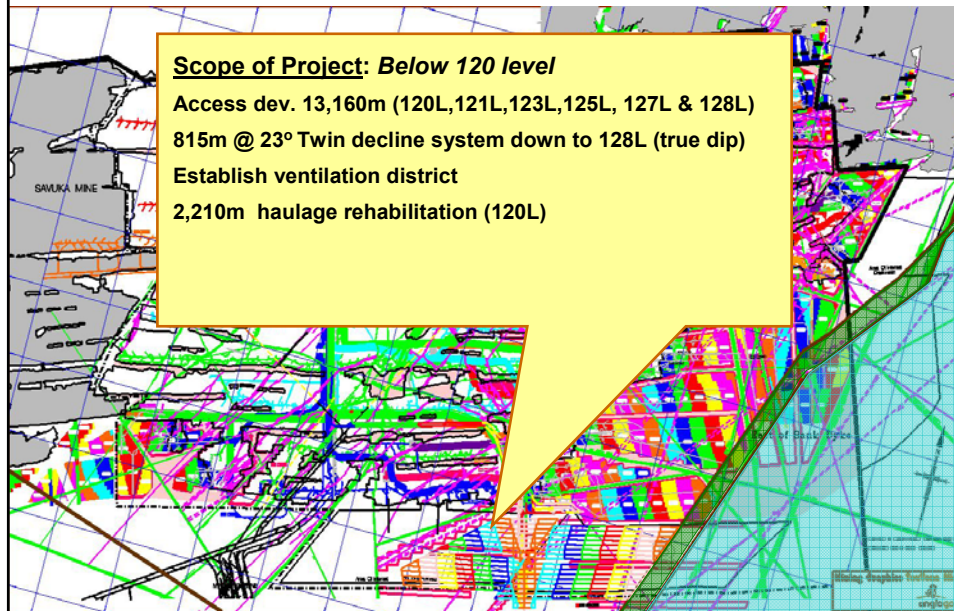
Feasibility Study - VCR Area A Overview



Feasibility Study - VCR Shaft Pillar Overview



Feasibility Study – CLR Below 120L Overview

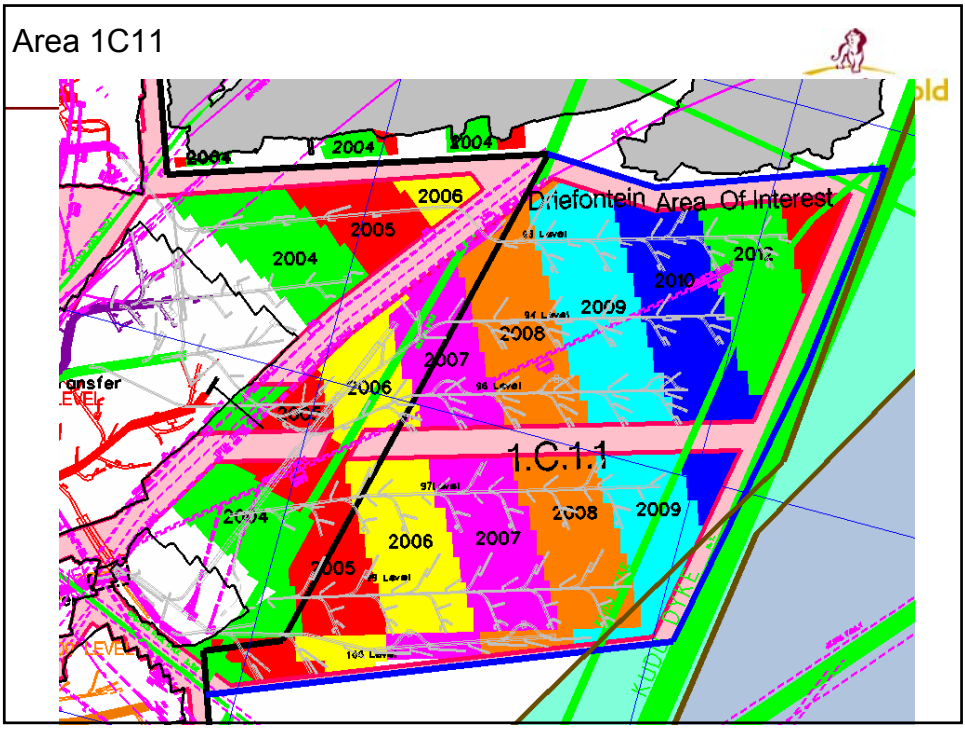


Area 1C11



- Purchased from Gold Fields in September 2003 for R315 million in cash
- production 2004 - 2012, longwall mining method
- FA of 9m per month planned
- 268 000m², 15 tons gold, value of 2384cm.g/t
- 10758m of development required

TAUTONA MINE



Further opportunities under investigation



- CLR Below 120 block B
- Below 126 level Carbon Leader Reef
- Area "B" VCR
- TauTona shaft pillars within the ZOI

TAUTONA MINE

Visitors Induction



*In order to make your underground visit a safe, enjoyable and memorable one, we would like to introduce you to some of our concepts regarding **your safety and our attitude***

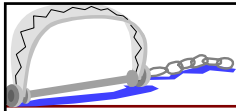
TAUTONA MINE

You are valuable ... so

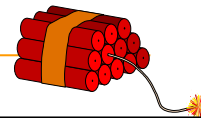


- Do not go off on your own, keep up with the group or you could get lost!
- Only drink from designated drinking water taps – not all underground water is potable
- If you have any questions or suggestions, please feel free to ask and share them with us

TAUTONA MINE



WORKING UNDERGROUND IS A
HARSH ENVIRONMENT
BEING **AWARE** OF ITS DANGERS WILL
ASSIST IN MAKING YOUR VISIT SAFE



TAUTONA MINE

On completion of this induction



- You will also be issued with Personal Protective clothing (to be discussed later)
- We will proceed to the shaft and go underground

TAUTONA MINE

Procedure for entering cages at the shaft



Only enter the cages when given permission to do so by the Onsetter



TAUTONA MINE

When waiting for the cages, do not enter the enclosed station area without your guide's permission



TAUTONA MINE

Ensure that you exit the cages with your guide



TAUTONA MINE



BE AWARE

**THE FOLLOWING DANGERS EXIST
UNDERGROUND AND ARE PRESENTLY HIGH ON
THE MOST FREQUENT ACCIDENT LIST ON
TAUTONA MINE**

TAUTONA MINE

Falls of ground



Be vigilant at all times

TAUTONA MINE

Beware of underground locomotives



TAUTONA MINE

PLEASE



DO NOT take cigarettes or any other smoking materials underground with you whether you intend to light up or not.

It is against the law and you may be prosecuted.

Flammable gases such as methane and hydrogen may be present underground.

Explosives are used underground

Discarded cigarettes can cause fires

TAUTONA MINE

Policy on taking cameras underground



- You must obtain prior permission from your Group Leader
- Your Group Leader will obtain a burning permission, which will be taken underground to the area being visited
- The burning permission must be filled in underground, and returned to the ESH Co-ordinator by your Group Leader upon your return to surface.
- TauTona Mine has the right to refuse photographs to be taken or published

TAUTONA MINE

Personal Protective Equipment



It is equipment that WILL be worn by every employee working in a hazardous environment.

IT IS A MEANS OF TAKING CARE OF YOU

Some examples:



TAUTONA MINE

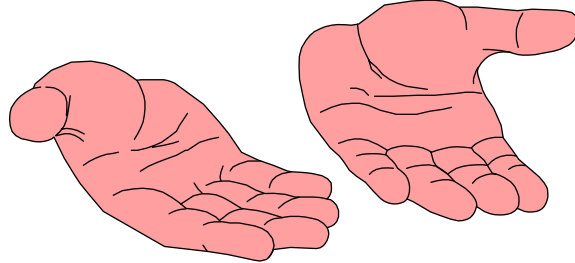
A final note...



- Please note that no valuable goods should be taken underground, as they may be damaged or lost. You are responsible for the security of your own goods.
- All jewellery is worn at your own discretion. However, the risk exists that your jewellery may catch onto something, resulting in possible injury to yourself.

TAUTONA MINE

REMEMBER



SAFETY IS IN YOUR HANDS,

Remember:

YOU ARE IMPORTANT TO US !



TAUTONA MINE



**WE TRUST THAT YOU WILL
HAVE A SAFE AND ENJOYABLE
VISIT AT TAUTONA MINE**

TAUTONA MINE